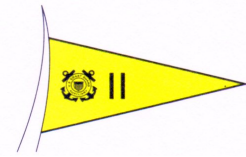


# UNITED STATES COAST GUARD AUXILIARY

Phone (925) 695-4874, E-mail [mdhay@hotmail.com](mailto:mdhay@hotmail.com)



OFFICE OF THE  
DISTRICT STAFF OFFICER  
NAVIGATION SYSTEMS

TO: Dean McFarren, COMO District 11N  
Curtis Han, District Chief of Staff 11N  
District 11 North Board & Staff

CC: ADSOs-NS  
AV-PQS

FROM: Michael Hay, DSO-NS

DATE: October 4, 2021

## **Highlights:**

- Bridge surveys and PATON verifications underway.
  - There are 50 bridges to survey and 773 PATONs to verify.
- Embedded at CSTA Alameda, Waterways Management, dpw
- Due dates for all PATON verifications arrived – last quarter cleanups

## **Details:**

- 50 of 50 bridges (100%) have been surveyed to date. We have completed the Bridge survey period due date of May 31, 2021.
- 611 of 773 PATONs (79%) have been verified thus far. PATON verifications due date was September 30, 2021. Weather conditions, asset availability, personnel retirements and relocations have all contributed to challenge goal obtainment.
- DPW has completed the backlog of new Class III PATON configurations in IATONIS.
  - Working on backlog of new Class II PATONs
  - Refining new digitized processes
  - Enhancing Access db for usage by dpw and auxiliary
  - Working on backlog of PATON verification enteries
  
- Two charts below:
  - Divisional bridge and PATON Tables
  - AUXDATA II Navigation Systems Codes 30, 31, and 32 Reports

**Divisional Work Completion Tables:**

**Note: Work completions have been received post the preparation of these charts. Results will be displayed on next month's chart.**

	DIVISIONAL 2021, BRIDGE, ATON, & CHART UPDATING SUMMARY TABLE								OCT	1	2021				
Div.	AIDS TO NAVIGATION				BRIDGES				Private Aids				Aid Verifiers		
	B	A	P	U	AOR	Check	%	NotCheck	AOR	Check	%	NotCheck	Trainee	PQS	
1	4		179	2	2	2	100%	0	107	107	100%	0	1	7	
3	17	3	42	14	15	15	100%	0	33	33	100%	0	0	3	
4					2	2	100%	0	69	69	100%	0	0	1	
5	13	1	95	4	11	11	100%	0	102	93	91%	9	0	7	
6	3	2	69		2	2	100%	0	69	69	100%	0	1	3	
8	1	16	3		1	1	100%	0	5	3	60%	2	0	1	
10	9		40		9	9	100%	0	54	40	74%	14	0	6	
11			56		0		NA	0	145	56	39%	89	1	8	
12	8		141		8	8	100%	0	188	141	75%	47	4	7	
<b>Total</b>	<b>55</b>	<b>22</b>	<b>625</b>	<b>20</b>	<b>50</b>	<b>50</b>	<b>100%</b>	<b>0</b>	<b>772</b>	<b>611</b>	<b>79%</b>	<b>161</b>	<b>7</b>	<b>43</b>	
Total Aids to Navigation					722				Number of members submitting an ATON or CU Reports					35	
Total Chart Updating 1/1/21 to 12/31/21					0				A=ATON, P=PATON, U=Unauthorized, B=Bridge						
Total ATON/CU Activity					722				C=Chart Update, CP=Coast Pilot Update, CCP=Charting Credit Points						

**AUXDATA II Navigation Systems Codes 30, 31, and 32 Reports**

**Note: Work completions have been received post the preparation of this chart. Results will be displayed on next month's chart.**

	Trainee	PQS	# Missions in AuxData II	Hrs in AuxData II
1	1	7	16	52.5
3	0	3	16	42.1
4	0	1	0	0
5	0	7	19	60
6	1	3	9	17.5
8	0	1	18	17.2
10	0	6	2	15
11	1	8	5	29
12	4	7	3	10
<b>Total</b>	<b>7</b>	<b>43</b>	<b>88</b>	<b>243.3</b>

**Note:** 1 Trainee has completed her PQS and has been submitted for PQS Certification

## **Divisional Activity:**

### **Division 1:**

- All PATON and BRIDGE verification sheets have been completed for Division 1
- Terry Blanchard, our local PATON wizard on his sturdy steed Silver Charm has additionally assisted Division 4 and Division 12 in completion of their assigned PATONS.
- A BZ goes out to our Aid Verifiers from each Flotilla, Stephen Straw, Bob Golden, Carol Paz, Mary Kirkwood, John Fortner, Mary Stephens, Sue Fry, Terry Blanchard, Alex Bennett and I hope I included everyone, for delivering once again for 100% effort.

### **Division 3:**

I have attached the following Navigation Systems Activities for CY 2021 Report as of 1 October.

1. Year to Date for DIVISIONAL 2021, BRIDGE, ATON, & CHART UPDATING SUMMARY TABLE.
  - a. (Aid Verifiers TAB 1 & Divisional Summary Table TAB 2 at bottom-left of screen)
2. Year to Date for Divisional & Member AUXDATA II activity.
3. Year to Date for 113 MASTER PATON & Bridge & Divisional all types of Aid activity.

### **Division 5:**

Flotilla 5-3

- All the assign PATONs and Bridge Surveys are complete with this month being Suisun 19, 20 and the Montezuma Locks. I am working on completing paperwork for the later-- Should have them to you this weekend

Flotilla 5-5 Navigation Systems Report September

- On Training patrol September 18<sup>th</sup> in Bodega Bay, visually checked Atons and Patons in Bay and harbor.
- I will be getting my crewman check ride this weekend at Bodega Bay at Flotilla 5-5 Optrex. By requalifying, I can participate in future patrols to check Nav Aids by boat.

Flotilla 5-7

- No aids verified during the month of September
- Work continues at CGI one day per week.

### **District Projects:**

- **Completed:** Produce PATON sheets for distribution to AV personnel for 2021 PATON verifications.
- **Completed:** Produce electronic copies of PATON sheets and bridge sheets for 2021 verifications and surveys.
- **Underway:** Transition DSO role from Jim Duncan to Mike Hay
- **Completed:** Embed personnel at dpw and secure system access
- **Underway:** Capture backlog (due to COVID absences) of IATONIS entries at dpw

### **National Interaction:**

- Currently BC-PNP for Navigation Systems
- Began working on planning for 2022 NS C Schools -currently projecting August class to be held at CGSTA Alameda – initiated planning for August class.

### **Challenges/Obstacles/Opportunities:**

- With Phase III upon us, Covid impacts of operations appear to be minimalized.
- Weather, as in, air quality, severely hampering outdoor activities (e.g. PATON verification) in Lake Tahoe area.

### **Agency Interaction:**

- District 11 N/S has completed 100% of Class I, 45% of Class II and 20% of Class III verifications for 2021.
- Added 2 new PATONs to district stable
- Bob Bain (FL57) and Michael Hay (FL57) area continue working weekly at Waterways Management (dpw) as PATON Administrations.
- Backlog of Class II PATONs in progress – making headway

### **Goals & Objectives:**

- **COMPLETED:** 100% surveys of 50 bridges for 11N – *Work underway – 50 of 50 completed*
- 100% verifications of 773 PATONs for 11N – *Work underway*
- **Completed:** *Produce and distribute electronic bridge survey sheets for 50 bridges in 11N by the end of January*
- **Completed:** *Produce and distribute 2273 electronic and printed PATON sheets for both both 11N & 11S by mid-February.*
- Create an Access db to support record keeping, PATON information access and processes for dpw at CGSTA Alameda – *Work Underway*
- Actively support development of new national 7054 form – Draft completed, seeking approval through National command for later distribution.
- Actively support planning for National C Schools for 2022. Actively support planning for CGSTA Alameda class, Aug 2022.

**Note/Disclaimer:** In recognition of COVID impacts, it is understood that 100% completion is a stretch goal for 2021. Consequently, priorities have been established to complete surveys and verifications in the following order: Bridges (completed), Class I (completed), Class II and then Class III PATONs

### **Photos:**

None

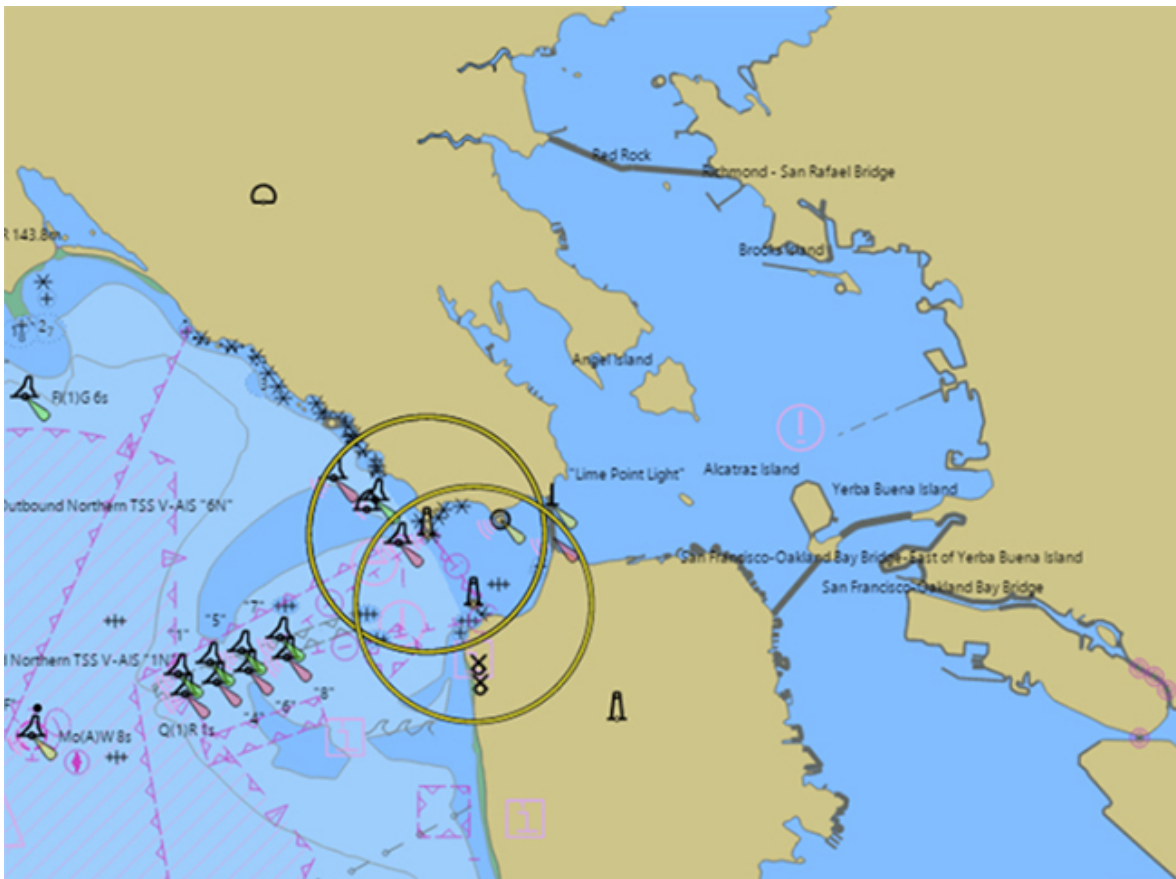
## NAV NOTES:

### NOAA nautical chart products

NOAA produces nautical charts in two different formats, called raster and vector. Each of these types are compiled and distributed using different methods.

#### Electronic navigational charts (ENCs)

The ENC product format is specified by the International Hydrographic Organization (IHO). Each ENC is a digital database that stores the location and shape of charted features as pairs of latitude and longitude coordinates. This is known as “vector format” data. Database records associated with each feature provide detailed information, such as the feature's color, shape, height, purpose, quality of position, and other attributes. The data contained within ENCs can be used by electronic navigation systems to enable safer voyage planning and route monitoring. This includes initiating warnings and alarms when a ship is heading into shallow water or toward other dangers to navigation. Updated ENC revision files are available weekly. When ENC revision data is loaded many navigation systems apply these updates automatically. ENCs will continue to be produced and enhanced after all raster format charts are canceled.



Typical small scale portrayal of ENC data covering Entrances to San Francisco Bay.

**A new ENC-based option for paper charts**

The online NOAA Custom Chart (NCC) application at <https://devgis.charttools.noaa.gov/pod> was developed to enable users to create their own customized charts directly from the latest NOAA ENC data. While these custom charts do not fulfill U.S. Coast Guard carriage requirements for regulated commercial vessels, they contain the same up-to-date information contained on ENCs.

A new version of NCC will become available in the spring of 2021 and a new webpage with more information about the application and how to use it will be launched at that time.