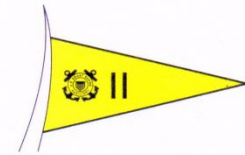


UNITED STATES COAST GUARD AUXILIARY

Phone (925) 695-4874, E-mail mdhay@hotmail.com



OFFICE OF THE
DISTRICT STAFF OFFICER
NAVIGATION SYSTEMS

TO: Curtis Han, District Chief of Staff 11N
District 11 North Board & Staff

CC: ADSOs-NS
AV/AV-PQS
Bill Wicks, DSO-NS 11S
Ed Martin, Auxiliary National NS Captain
Mike Salsman, PATON Administrator, D11
John Hardin, Coxswain, Sidekick

FROM: Michael Hay, DSO-NS 11N

SUBJ: DSO-NS D11N Monthly Report for February 2023

DATE: March 9, 2023

Highlights:

NS Program underway for 2023

- 791 PATONs to verify
- 52 bridges to survey

Waterways Management (dpw):

- Systems Management enhancements
- PATON Permit Move, Adds and Changes
- Discrepant/7054 Response

National NS Work:

- C School scheduled in Alameda for 2023
- Update of AuxData II reporting for Navigation Systems

Details:

- 791 PATONs to be verified in 2023
 - PATON verifications due September 30, 2023
 - 2023 PATON sheets, both electronic and paper, have been distributed to both 11N and 11S SO-NSs with guidance for 2023
 - Goal is 100% verification with priority on Class I and IIs.
- 52 Bridges to be surveyed in 2023
 - Bridge surveys due May 31, 2023
 - 2 bridges are exempt due to challenging conditions – Isla Creek in SF

- 2023 paper Bridge sheets have been distributed to 11N SO-NSs
- 2023 Bridge electronic sheets are available on the District 11 bridge site.
- Waterways Management:
 - Move, add or change all new permitted PATONs as they occur
 - Major project to add 192 PATONs off Santa Barbara Light underway – 24 of 28 complete
 - Support D11S as needed- providing mechanism for “self-entry” into IATONIS
 - Provided and distributed electronic and paper PATON sheets for both 11N and 11S – feedback received for receipt from all SO-NSs in 11N and 11S
 - Distributed paper bridge sheets for 11N.
- National NS Branch:
 - Planned 28-30 JULY 2023 date for 2023 Navigation Systems C School to be held in Alameda again.
 - Coordinated all aspects for the C School classroom, hotel, and participant arrangements required to conduct the Alameda class.

Reports:

No 2023 reports available yet – No Activity - NS Report by Division- all Activities:

No AuxData II Reporting for 2023 yet – no activity to date:

Note: AuxData II reporting has noticeably improved and we’re continuing to encourage people to complete AUXDATA II input for work completed in order to receive due credit for their work and effort.

Around the Horn – Division Reporting:

Division 1:

- Division 1 SO-NS has received our Bridge and Paton assignments for 2023 from Michael Hay, DSO-NS.
- All assigned 2023 assignments were distributed to Flotilla 12, 14, 17 and 19 FSO-NS’s- Robert Golden, John Fortner, Sue Fry, and Terry Blanchard.
- These will be completed on a timely basis throughout the year.

Division 3:

- Distribution 2023 D11 (dpw) task to Division 3 Aid Verifiers 15 Bridge Surveys and 33 PATON.
- D11 Command Communication Call out to ASSIT in search for an activated EPIRB.
- Bridge Surveys Stated this Month.
- **Attachment:** NOAA Custom Chart version 2.0 released to the Public. <see Nav Notes below>

Division 5:

Progress Report for Committee interaction

- No interaction for this month provided.
- No NS involvement requested.

Non-Auxiliary Agency Interactions:

- No interactions

Recommendations for exemplary Performance

- None to report this month

Challenges and Obstacles

- Need new AV-PQS, especially in Flotilla 51 and 55

Training Available

- C-School opportunity exists at Coast Guard Island this summer. Details to come.

Those with AV_PQS in progress have mentoring opportunities with existing D5 members who are certified.

Division 8:

- Division 08 reports the following: Received Div 8 PATON sheets. Making arrangement to have all PATONs verified.

Division 11:

DETAILS:

Received PATON sheets.

UPCOMING EVENTS:

PATON patrols once OPS starts.

AGENCY INTERACTIONS:

None

GOALS:

Unclear until COVID restrictions resolved.

DSO 11N Goals & Objectives:

- **COMPLETED:** Distribute all electronic and paper PATON verification sheets to SO-NSs in both 11N and 11S by mid-February 2022
- **COMPLETED:** Distribute all electronic and paper Bridge survey sheets to SO-NSs in 11N by end of January 2022
- Complete 100% of District 11N bridge surveys by May 31, 2023
- Complete 100% of District 11N PATON verifications by September 30, 2023
- **COMPLETED:** Calculate and nominate AV personnel for NS awards at the end of January 2023 for 2022 awards – *certificates printed, signed and delivered to Division Commanders.*
- Improve count of AV personnel in district 11N – *currently have 28*

Waterways Management (dpw) PATON Administration Goals:

- Stay current with all IATONIS changes approved during the year
- Input all PATON verification data into Access db and IATONIS on a timely basis -
- Improve response and continue to define and implement a feedback loop for Discrepant Aid follow-up
- Report updated progress monthly
- Eliminate roadblocks to institutionalizing new Access db for multi-user usage – transferred existing db to new mainframe server due to CG wide server changes
- Support DSO-11S in enhancing their program
- Ensure currency of Class I and II PATON verifications for District 11

National Goals:

- **Scheduled and Planned:** Host C-06 School in Alameda during July 2023
- Teach one session of C-06 School – *will co-teach July 2023 C School*
- Participate in drafting of program materials as needed

Challenges/Obstacles/Opportunities:

In recognition of serious weather conditions impacting outside activities, retirement and loss of AV personnel, loss of facility support and restrictions on mode of travel to do verifications, it is understood that 100% completion is a stretch goal for 2023. Consequently, priorities have been established to complete surveys and verifications in the following order: Bridges, Class I, Class II and then Class III PATONs

Photos:

Nav Notes:

FEBRUARY 21, 2023 BY NOAACOASTSURVEY

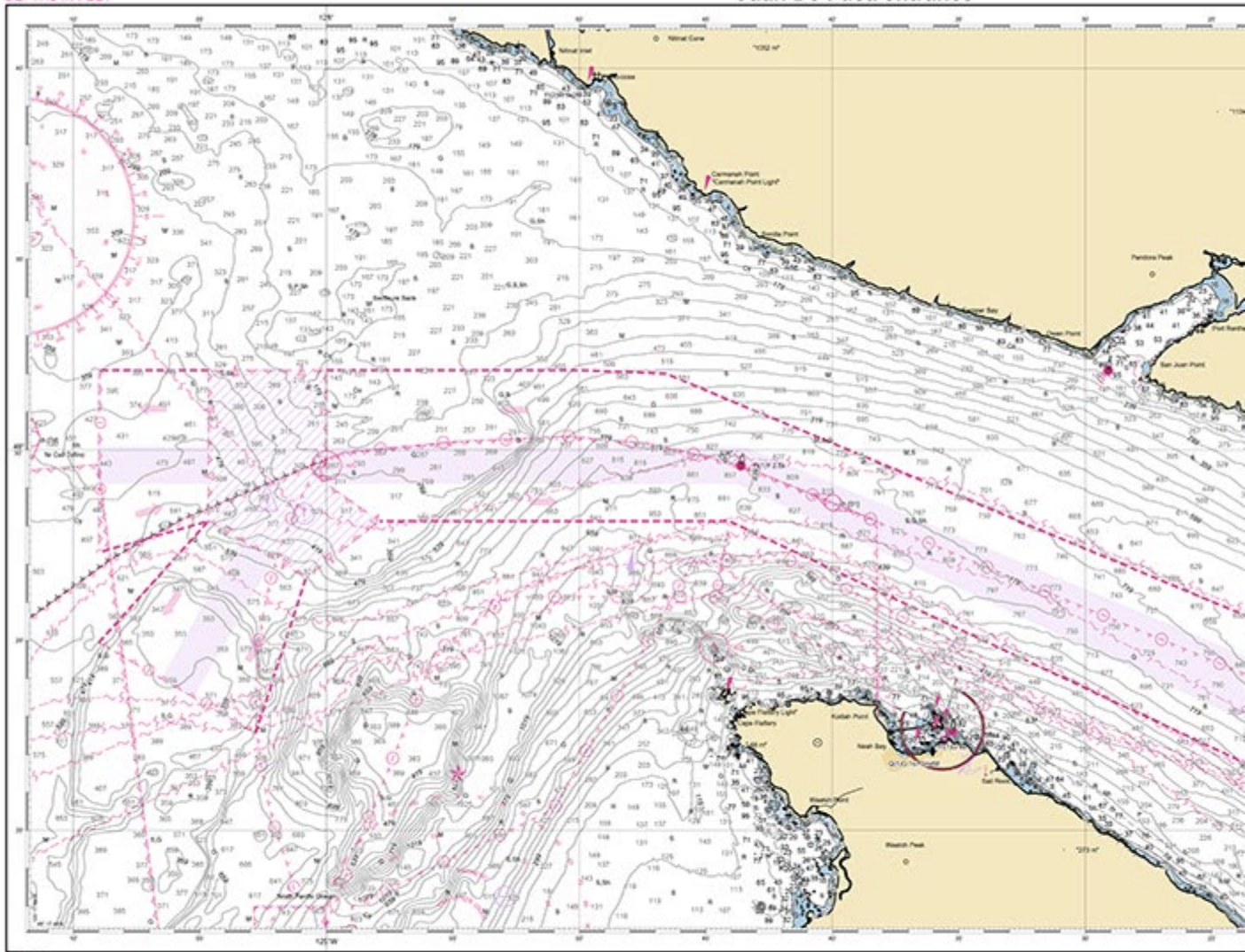
NOAA Custom Chart version 2.0 now available to the public

On February 14, 2023, NOAA's Office of Coast Survey released NOAA Custom Chart version 2.0, a dynamic map application, which enables users to create their own paper and PDF nautical charts derived from the official NOAA electronic navigational chart (NOAA ENC®), NOAA's premier nautical chart product.

The online application uses the latest official NOAA ENC data to create nautical charts with customized scale and extent, which can then be downloaded as PDF files. The data on the chart is presented in a manner similar to traditional paper nautical charts, showing soundings, buoys, beacons and other aids to navigation, compass roses and the like.

DEPTHS IN FEET

Juan De Fuca entrance



WGS 84
Horizontal Date: 20110301
Page No: 4017 - 4017 of 4017



ACQUISITION INFORMATION
This chart is a reproduction of the original chart as published by the Hydrographic Office, London, and is not a substitute for the original chart. The Hydrographic Office is not responsible for any errors or omissions in this chart or for any damage or loss resulting from its use. The Hydrographic Office is not responsible for any errors or omissions in this chart or for any damage or loss resulting from its use.

NOTES
1. Reproduction of the scale by depth, height, sounding, and other numerical information is shown on this chart as to indicate relative accuracy. It is not intended to be used as a substitute for the original chart.

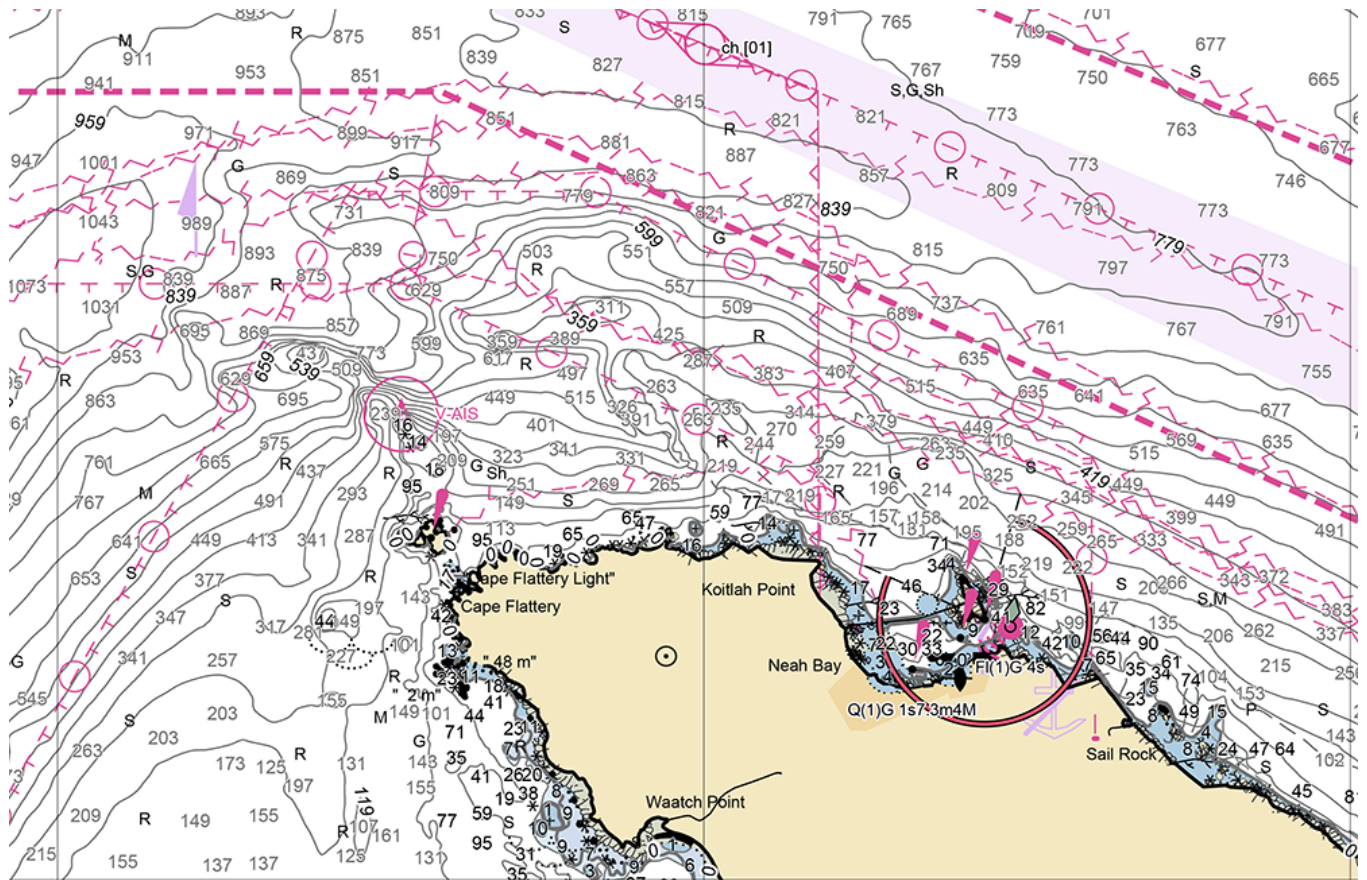
ALTIMETERS
Nautical and geographic heights are shown in feet above mean low water. Other heights are indicated with their type of datum. Bearings are given in true, unless otherwise indicated.

PUBLICATION INFORMATION
This chart is a reproduction of the original chart as published by the Hydrographic Office, London, and is not a substitute for the original chart. The Hydrographic Office is not responsible for any errors or omissions in this chart or for any damage or loss resulting from its use.

PROJECTION INFORMATION
WGS 1984 UTM Zone 18N
SCALE 1:100,000 at Lat 48°28'25"
GCS WGS 1984

CAUTION
Nautical charts are not intended to be used as a substitute for the original chart. The Hydrographic Office is not responsible for any errors or omissions in this chart or for any damage or loss resulting from its use.

An image of the output from the NOAA Custom Chart application with chart scale set at 1:100,000.



A zoomed in image of the output from the NOAA Custom Chart application. Additional enhancements from the previous version include:

- A streamlined user interface that describes each setting.
- Further improvement of chart symbols.
- Additional page size options.
- The addition of more chart notes, particularly in areas where traditional paper charts have been canceled.

The most noteworthy change is the addition of the Personal Chart Catalog functionality, which allows users to save their charts to an exported Chart Catalog file. Users can then recreate a chart or multiple charts repeatedly as NOAA releases ENC updates by uploading the file in a new session of the NOAA Custom Chart in their web browser. The Chart Catalog file is small in size and can be emailed easily as an attachment, allowing users to share with print vendors or collaborate with others. NOAA is working on enhancing its Chart Updates website to allow users to upload the same Chart Catalog file and check for updates to their custom charts.

Chart Catalog Viewer

Catalog changes will be lost if you close the application before clicking "Save Chart Catalog".

Open Existing Chart Catalog

Create New Catalog

Save Chart Catalog

Charts in Active Chart Catalog (none)

	Actions	Date	Title	Scale	Page Size	Orientation	Coordinates	Depth Units	Dep
<input type="checkbox"/>	Delete	2/10/2023	Chesapeake Bay - Choptank River to Chester River	80000	ANSI E	Portrait	38.824°N 76.313°W	Fathoms	
<input type="checkbox"/>	Delete	2/10/2023	Patapsco River	30000	ANSI D	Landscape	39.216°N 76.522°W	Feet	
<input type="checkbox"/>	Delete	2/10/2023	Annapolis Harbor	10000	ANSI D	Portrait	38.967°N 76.449°W	Feet	

Select All

Clear Selection

← Add Selected Charts to Chart Queue

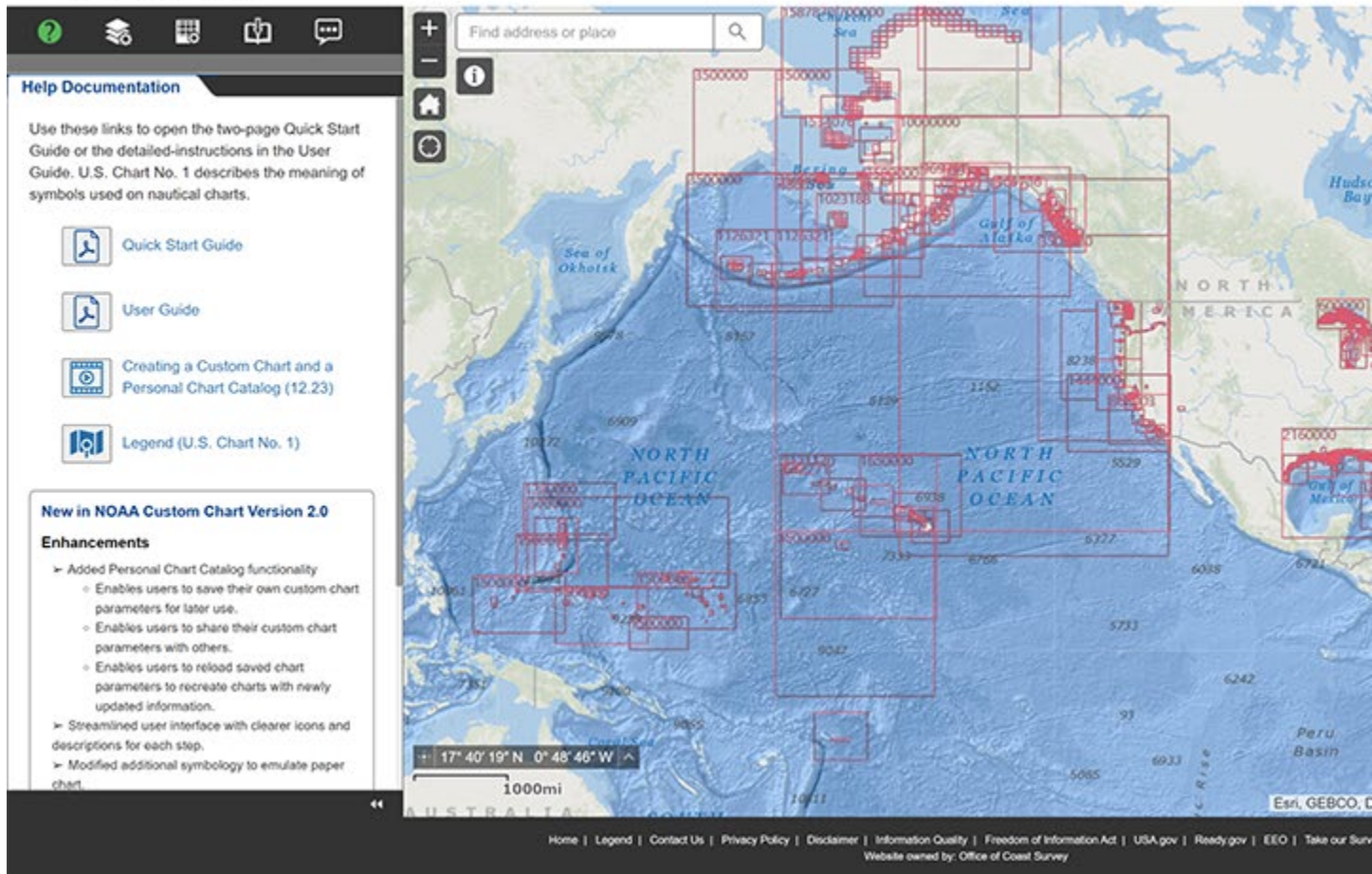
Catalog changes will be lost if you close the application before clicking "Save Chart Catalog".

A screen capture showing the NOAA Custom Chart catalog.

NOAA looks forward to future enhancements, which include improved compass rose placement, enhanced text labels, and options for use of additional types of chart symbols.

Traditional paper and raster charts are still updated on a weekly basis with critical navigation changes that are released in the U.S. Coast Guard Local Notice to Mariners. However, other changes, such as data from new shoreline and bathymetric surveys, and other non-critical changes – which are routinely applied to the ENC – are no longer compiled onto traditional paper and raster charts. NOAA will end production of its traditional paper nautical charts by January, 2025, but will continue to provide users access to paper charts created directly from ENC data via the NOAA Custom Chart application.

Custom chart PDFs created for letter or legal-size paper can be printed on a home printer. PDFs for large format charts may be sent to one of these companies for plotting or printed through other commercial print shops.



A screen capture showing the interactive home page of the NOAA Custom Chart application. A User Guide is available to help users navigate the NOAA Custom Chart application. NOAA is actively making improvements to NOAA Custom Chart, and is interested in hearing about users' experiences and getting suggestions for additional enhancements.