



U.S. Coast Guard Auxiliary

District 113

Serving Northern California, Nevada, Utah



District Navigation Systems

Covering Aids to Navigation, Bridges, & Chart Updating Activities

Accuracy - Credibility – Professionalism - Service to the Coast Guard & NOAA-NOS

2020-06-113 DSO-NS Report/Bulletin

Date: July 3, 2020
 From: D113 DSO-NS
 To: DCAPT- P & All D11 Auxiliary Members for Immediate Action
 Info: EXCOM, Board & Staff, SO-NS, FSO-NS & Aid Verifiers, D11 (dpw) & D11 (dpa-n)
 Subject: DSO-NS June Report/Bulletin Ending July 3rd

SO-NS please contact each FSO-NS to see that they receive a copy of this bulletin.

Additional copies can be downloaded at:

<http://wow.uscgaux.info/content.php?unit=113&category=navigation-systems-1>

CONTENTS OF THIS REPORT

- | | |
|--|--------|
| 1. HEALTH SAFETY BULLETIN – STILL SHELTING-IN-PLACE on 7/3/2020: | Page 1 |
| 2. New High-Definition (HD) Charts is an Advance Precision Marine Electronic Navigational Charts (ENC) from NOAA Office of Coast Survey dated 6/17/2020: | Page 1 |
| 3. To ALCOAST-2020 COMDTNOTE 6010-WORLD MARINE AIDS TO NAVIGATION DAY dated 6/29/2020: | Page 3 |
| 4. U.S. COAST PILOT® 7 NEW EDITIONS 52 is now available online covering California as of 6/23/2020: | Page 4 |
| 5. D113 Navigation System AUXINFO 2020 Report as of 7/03/2020: | Page 5 |
| 6. D113 Navigation System Activity 2020 Report as of 7/03/2020: | Page 6 |
| 7. Have You Check Chart Dates Lately? Dates of Chart Latest Editions Table as of 7/03/2020: | Page 7 |

1. Here we are still on Shelter-In-Place, and unable to do our favorite Auxiliary activities as we like to be doing. I hope my DSO-NS Report/Bulletin finds you and your family healthy and safe. I know this is an incredibly stressful time for all of us when we cannot get out to do our auxiliary activities. I urge everyone to heed the warnings and comply with the shelter-in-place orders. With most of us in the vulnerable group and with less exposure to other means less chance of getting the virus. Things were starting to look better, but it is looking bad again. We still all hope this will end soon. Maybe sometime in **July** we be the end this lock down so we can get back to our favorite Auxiliary activities.

2. New High-Definition (HD) Charts is an Advance Precision Marine Electronic Navigational Charts (ENC) from NOAA Office of Coast Survey:

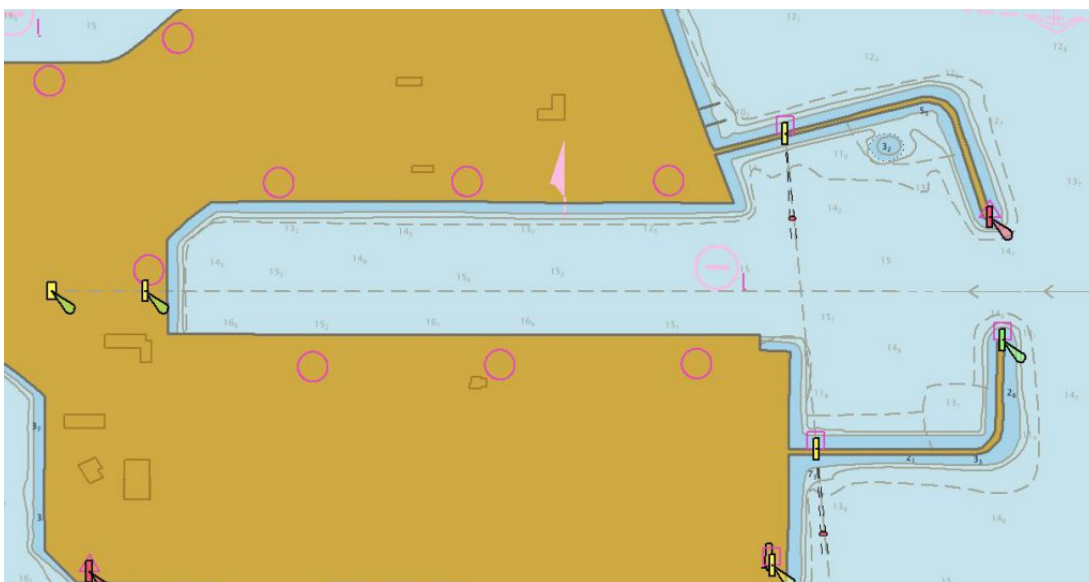
By Craig Winn, HD charting portfolio manager

For large vessels entering port where there is next to zero margin for error, pilots and shipmasters are looking for the highest resolution data available to help them navigate these tight spaces safely and efficiently. NOAA’s Office of Coast Survey recently constructed and released 16 high-definition (HD), band 6 (**or berthing scale**) electronic navigational charts for Los Angeles/Long Beach Harbor, providing mariners with the best charts available to do their job.

HD charts contain all features necessary for navigation, but also have bathymetry with one-meter curve intervals. They comply with the International Hydrographic Organization’s S-57 standard and offer a new opportunity to deliver chart products that fully take advantage of high-resolution hydrographic surveys.



A berth in Los Angeles/Long Beach Harbor depicted on a band 6 (or **berthing level**) HD electronic navigational chart.



A berth in Los Angeles/Long Beach Harbor depicted on a band 5 (or **harbor level**) electronic navigational chart.

The HD charts for Los Angeles/Long Beach Harbor are available through Regional ENC Distribution Centers (RENC) and from the Coast Survey's website at . These products represent an innovation in the delivery of bathymetric data within our navigation products. We welcome user feedback on improving these electronic navigational charts through the ASSIST tool. Go to <https://www.nauticalcharts.noaa.gov/ENOnline/enconline.html> and zero in on Los Angeles/Long Beach Harbor and you can see the difference by clicking on (+) sign until you get the smallest scale.

As Coast Survey continues to collect high quality, high-resolution hydrographic data in major U.S. ports, Coast Survey plans to construct more HD charts within our product suite. Coast Survey is currently planning a scheme of HD charts covering the Mississippi River from the mouth of the river extending up to Baton Rouge, Louisiana.

Hopefully soon for San Francisco Bay Harbor areas.

3.

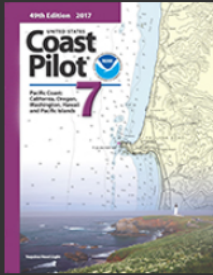


United States Coast Guard
U.S. Department of Homeland Security

R 291118 JUN 20
FM COMDT COGARD WASHINGTON DC//CG-5PW//
TO ALCOAST
UNCLAS //N06010//
ALCOAST 256/20
COMDTNOTE 6010
SUBJ: 2020 WORLD MARINE AIDS TO NAVIGATION DAY

1. The International Association of Marine Aids to Navigation and Lighthouse Authorities (IALA) is celebrating the second annual World Marine Aids to Navigation Day on July 1, 2020. This day was created to promote greater awareness to mariners and the public of the vital role of Marine Aids to Navigation in ensuring the safety and efficiency of navigation.
2. The United States is a maritime nation blessed with natural navigable waterways, deepwater ports, protected harbors, and access to the world's two largest oceans. Men and women of the Coast Guard continue to ensure the Nation's vibrant economy through their efforts in establishing and maintaining ATON in the U.S. Marine Transportation System (MTS). This dedication provides a gateway for economic growth, increases the capacity of the MTS, facilitates lawful trade, mitigates risk to critical infrastructure, and ensures the safety and resiliency of the system. More than 90% of U.S. imports and exports move by ship past 95,000 miles of shoreline, through 25,000 miles of navigable rivers and coastal waterways, and into 361 commercial ports. Today's MTS supports \$5.4 trillion in economic activity annually, and more than 23 million jobs.
3. Each year the 76 cutters and 64 ATON Teams that make up the Coast Guard's Black Hull fleet maintain more than 48,000 buoys, beacons, and electronic aids that mark the waterways of the MTS. From eATON in Samoa, to the "CR" buoy marking the infamous Columbia River Bar, to the candy-cane striped White Shoal Light in Lake Michigan, to the hundreds of "sticks" in the Gulf of Mexico, to our treasured Boston Light, our Black Hull fleet and sailors keep the MTS "winking 'n blinking" no matter the weather or time of day. Most remarkably, this fleet has persevered through the current global pandemic, facilitating the safety of marine traffic supplying the groceries, medical supplies and cleaning and sanitation supplies necessary for our Nation to recover and heal while the demand for these products nearly outpaced the supply chain.
4. We continue and value our partnership with IALA to ensure we, as America's premier multi-mission maritime service, maintain our storied legacy of light by working with our international partners to make waterways safer, more efficient, and more resilient.
5. I encourage all ATON professionals, and Black Hull sailor's past and present, to celebrate this milestone day and recognize your roles in safeguarding the U.S. Marine Transportation System.
6. Mr. Michael D. Emerson, Director of Marine Transportation System Management, sends.
7. Internet release is authorized

4. U.S. COAST PILOT® 7 NEW EDITIONS 52 IS NOW AVAILBLE: Changes to the **U.S. Coast Pilot® 7, NEW EDITION 52** Dated **June 9 2020** was divided into two new editions due to U.S. Coast Pilot® 7, Edition 51 large size. The Coast Pilot® 7 NEW EDITION 52 now **only** covers the California information is ready for free download and weekly updates at <https://nauticalcharts.noaa.gov/publications/coast-pilot/index.html>



The cover of U.S. Coast Pilot 7, Edition 52 features a map of the California coast with a large red number '7' and the NOAA logo. The text on the cover includes '4th Edition 2017' and 'U.S. Coast Pilot® 7'.

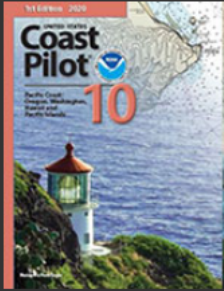
Select a region in the map to view and download Coast Pilot.

Book Edition: 52

Current Edition: 2020

Next Edition: May, 2021

The last **U.S. Coast Pilot® 7, Edition 51** covering Oregon, Washington, Hawaii & Pacific Islands is now in the new **U.S. Coast Pilot® 10, NEW EDITION 1, Dated June 9 2020** is ready for free download and weekly updates at <https://nauticalcharts.noaa.gov/publications/coast-pilot/index.html>



The cover of U.S. Coast Pilot 10, Edition 1 features a lighthouse on a cliff overlooking the ocean with a large red number '10' and the NOAA logo. The text on the cover includes '5th Edition 2016' and 'U.S. Coast Pilot® 10'.

Select a region in the map to view and download Coast Pilot.

Book Edition: 1

Current Edition: 2020

Next Edition: June, 2021

Visit NOAA Certified Chart Agents and ENC Distributors site for Print-on-Demand bound copies which are available for purchase; <https://www.nauticalcharts.noaa.gov/publications/print-agents.html>

For any questions or comments, visit <https://www.nauticalcharts.noaa.gov/customer-service/assist/> NOAA Office of Coast Survey's Nautical Publications Branch.

5. 2020 NAVIGATION SYSTEMS AUXINFO REPORT AS OF 4 APRIL:
“LAST CHANGE FROM AUXDATA I”
“UPDATES FROM AUXDATA II is NOT CURRENTLY AVAILABLE ”

“We are still on Shelter-In-Place - NO change from Last Month”

AUXDATA I Cube last refreshed on Sunday APRIL 5, 2020									
ATON-Aids to Navigation 30-31-32	District 113	All Facilities	All Unit Locations	All Activities	CY 2020	All Statuses	Lead ONLY	All Operations	
Some of this AUXDATA Information does not match actual reports submitted to DSO-NS & D11 (dpw). SEE BELOW				BRIDGE – Bridge Administration (32)		FEDERAL – ATON/Chart Update (30)		PRIVATE – Private Aids to Navigation (31)	
				ATON Bridge Verified	ATON Bridge Discrepancy	ATON Aids Verified	ATON- Aid Discrepancy Reported	PATON Aids Verified	PATON - Aids Discrepancy Reported
113-01-02 SAUSALITO-Tiburon	MANI, CASSANDRA 2								
113-01-04 CENTRAL MARIN	FORTNER, JOHN C						3		
	KIRKWOOD, MARY L						5	1	
	PAZ, CAROL H						34		
	RUSSO, PAULA J						4	3	
113-01-07 POINT BONITA									
113-01-09 COYOTE POINT	BLANCHARD, TERRY M							2	
113 - DIV 01							48	6	
113-03-05 SACRAMENTO	BLACK, FREDRIC R								
	DUNCAN, JAMES B						2		
	MACPHERSON, DOUGLAS W								
113 - DIV 03							2		
113-05-02 NAPA									
113-05-03 NORTH SOLANO COUNTY									
113-05-05 SONOMA COUNTY									
113-05-07 DIABLO									
113 - DIV 05									
113-06-10 CAPITOLA FLOTILLA	SIMPSON,BRUCE						6	1	
113 - DIV 06							6	1	
113-08-08 NEW LAKE COUNTY									
113—08-11 CRESCENT CITY FLOTILLA									
113 - DIV 08									
113-10-06 KAWEAH									
113 - DIV 10									
113-11-01 NORTH LAKE TAHOE									
113-11-03 RENO									
113-11-04 SOUTH LAKE TAHOE									
113 - DIV 11									
113-12-01 EAST BAY	KAPLAN, GARY								
113-12-91 SAN RAMON VALLEY	LOSI, JAMES G								
	PISIO, RICHARD W								
113 - DIV 12									
113 RAW UNCORRECTED AUXDATA INFORMATION				22	9	0	0	56	7
PROBABLE AUXDATA INPUT ERRORS MADE or NOT AV-PQS				-18	0	0	0	-3	0
113 ESTIMATED CORRECTED AUXDATA INFORMATION				4	9	0	0	53	7

DSO-NS Note: Only CG Unit Requested Verification of an ATON may be ↑ entered in this column!

Question: Have you submitted your Navigation Systems 7030 reports and your name is not on the table above? Is the data above incorrect? If so, then you have not submitted a 7030 or all of your 7030's for your Navigation Systems activity to be entered by your FSO-IS. If you have submitted all your 7030's for your Navigation Systems activities, then check with your FSO-IS Officer for the answer. Again, the FSO-IS, SO-IS & DSO-IS is the only members that can enter your Navigation Systems activity into AUXDATA.

NOTE: All Navigation Systems activity awards for this year and AV certifications for next year is taken from AUXDATA information. Remember the old saying “If it’s not in AUXDATA it didn’t happen.” That is why you should always check the table above each month. So, this way you can see that if you have not reported your NS activity (7030) to your FSO-IS or they have not entered your NS activity incorrectly you have time for them to correct your information into AUXDATA. The FSO-IS or SO-IS is the only member that can enter and correct your Navigation Systems activity into AUXDATA and only you can let the FSO-IS or SO-IS if the data information is incorrect.

I hope AUXDATA II information will be available to report next month?

6. 2020 NAVIGATION SYSTEMS ACTIVITY REPORT:

"We are still on Shelter-In-Place - NO AUXDATA I change from Last Month"
"NO AUXDATA II data information currently available"

This summary report activity table covers all ATON, PATON, Bridge, & Chart Updating activities & reports received by D11 (dpw), NOAA-OFFICE OF COAST SURVEY & AUXINFO through **July 3, 2020**.

2020 DIVISIONAL, BRIDGE, ATON, & CHART UPDATING ACTIVITY SUMMARY REPORT

Div.	AIDS TO NAVIGATION ACTIVITY							Bridges Assigned				PATON's Assigned				2019 AVPQ In Training	A V - P Q S		
	Bridge	Bridge AUX Data Lead only	ATON	ATON AUX DATA Lead only	PATON	PATON NO Permit	PATON AUX DATA Lead only	AOR	Check	% Done	Still to Do	AOR	Check	% Done	Still to Do				
1		6	1		39		54	4		0%	100%	104	36	35%	68	1	7		
3	11	11	1		2		2	15	10	67%	5	34	2	6%	32	0	3		
4								2		0%	100%	67		0%	100%	0	2		
5								11		0%	100%	103		0%	100%	1	8		
6	2	2			7		7	2	2	100%	0	67	7	10%	60	0	3		
8								1		0%	100%	5		0%	100%	1	1		
10								9		0%	100%	54		0%	100%	1	4		
11								0		0%	0	144		0%	100%	1	8		
12	6	12					18	8	6	75%	2	181		0%	100%	3	7		
Total	19	31	2		48	18	63	52	18	35%	34	759	45	6%	714	7	43		
Total Aids to Navigation Reports							87	Total Members Submitting ATON & CU Reports in 2020 →							11				
*Total Navigation Systems in AUXDATA I							94	94 out of 87 ATON & CU reports showing up in AUXDATA I →							108%				
Total Chart Updating Reports							0	B= Bridges, A= ATON, P= PATON, U= Unauthorized & CU=Chart Updates/CP-Coast Pilot.											
Total ATON & Chart Updating							87	CUC = Chart Update Credits, (113 Stop Gap) = 26 CUP awarded by D113 DSO-NS for each confirmation of a Report you recently submitted via NOAA -Office of Coast Survey ASSIST Report System.											

Note: *Red numbers above is the information from AUXINFO as of **APRIL 4, 2020** update

CHART & COAST PILOT UPDATE SUBMISSION THROUGH "NOAA -OFFICE OF COAST SURVEY ASSIST REPORT SYSTEM" SECTION BELOW

Div.	2019 D11NR Chart Updating Year Jan 1, 2019 to Dec 31, 2019				2020 D11NR Chart Updating Year Jan 1, 2020 to Dec 31, 2020		
	CU Reports	2nd Ob	CUC (26)		CU Reports	2nd Ob	CUC (26)
1							
3	1 - 4	2	182				
4							
5		1	26				
6							
8							
10							
11							
12							
Total	1 - 4 = 5	3	208		0	0	0

➤ Total D11 CU Reports & Credits 1/1/2020 through 12/31/2020 **0** **0**

➤ See **2020 NAVIGATION SYSTEMS INDIVIDUAL ACTIVITY AUXINFO REPORT** Page 5

➤ **AUXDATA 2 ACTIVITY NOT CURRENTLY AVAILABLE**

➤ **D11NR Chart Updating Year is from - January 1 through December 31 each year.**

➤ Note: The **Purple** number under "2nd Ob" indicates secondary Chart Updating Observers.

✓ Note: "ALWAYS submit a 7030 for all ATON, PATON, Bridge, & Chart Updating Activity. Your work is not completed until your 7030 is in your FSO-IS hands and entered in AUXDATA II "

✓ "Always check AUXINFO at http://www.uscgaan.com/aton_auxdata_information.htm and Click on "D11 NS Activity" then change "Year to 2020" for your Bridge & ATON activity. If you do not find your activity recorded and you have submitted the proper ANSC 7030, check with your FSO-IS or SO-IS for help." If you are not satisfied always contact the DSO-NS for help.

7.

DATES OF CHART LATEST EDITION TABLE

Charts Used in District 113, JULY 3, 2020

Chart No.	Chart Scale	Edition No.	Traditional Paper Chart Edition Date	Last Correction Date from LNM Update for NOAA On-Line-Viewer & RNC & ENC Navigational Charts	
				LNM 25/20	6/23/2020
18600	196,948	15	Mar 2011	LNM 25/20	6/23/2020
18602	40,000	13	Feb 2012	LNM 25/20	6/23/2020
18603	40,000	17	Mar 2012	LNM 25/20	6/23/2020
18605	15,000	13	Dec 2010	LNM 25/20	6/23/2020
18620	200,000	24	Feb 2012	LNM 25/20	6/23/2020
18622	25,000	56	APR 2016	LNM 25/20	6/23/2020
18623	40,000	12	Jan 2012	LNM 25/20	6/23/2020
18626	40,000	16	Dec 2012	LNM 25/20	6/23/2020
18628	10,000	9	Oct 2012	LNM 25/20	6/23/2020
18640	207,840	27	Oct 2015	LNM 25/20	6/23/2020
18643	30,000	18	Dec 2009	LNM 25/20	6/23/2020
18645	100,000	28	May 2013	LNM 25/20	6/23/2020
18647	40,000	16	Mar 2009	LNM 25/20	6/23/2020
18649	40,000	68	Jun 2013	LNM 25/20	6/23/2020
18650	20,000	58	Jan 2017	LNM 25/20	6/23/2020
18651	40,000	45	Dec 2013	LNM 25/20	6/23/2020
18652 SC	40,000:80,000	36	CANCELLED	2017	2017
18653	20,000	12	Oct 2012	LNM 25/20	6/23/2020
18654	40,000	45	Jan 2012	LNM 25/20	6/23/2020
18655	10,000	59	Oct 2006	LNM 25/20	6/23/2020
18656	40,000	56	Aug 2010	LNM 25/20	6/23/2020
18657	10,000	19	Nov 2005	LNM 25/20	6/23/2020
18658	10,000	31	Sep 2007	LNM 25/20	6/23/2020
18659	10,000	16	Jan 2012	LNM 25/20	6/23/2020
18660	20,000	3	Sep 2005	LNM 25/20	6/23/2020
18661	40,000	30	Mar 2009	LNM 25/20	6/23/2020
18662	40,000	22	May 2009	LNM 25/20	6/23/2020
18663	20,000	6	Apr 2006	LNM 25/20	6/23/2020
18664	20,000	12	Aug 26, 2000	LNM 25/20	6/23/2020
18665	40,000	11	Aug 2004	LNM 25/20	6/23/2020
18666	10,000	1	Nov 24, 2001	LNM 25/20	6/23/2020
18667	20,000	12	Aug 26, 2000	LNM 25/20	6/23/2020
18680	210,668	32	May 2013	LNM 25/20	6/23/2020
18682	20,000	15	APR 2016	LNM 25/20	6/23/2020
18685	50,000	34	Sep 2012	LNM 25/20	6/23/2020
18686	40,000	13	Jul 17, 1999	LNM 25/20	6/23/2020
18700	216,116	22	Jul 2003	LNM 25/20	6/23/2020
United State Coast Pilot	Volume 7	*52	2020 Edition with (72 COLREGS)	Last Corrected through 28 June 2020	
D11 CG Light List Weekly Updates	Volume 6	2020	Updated weekly	LNM 26/20 – 01JUL2020	

James B. Duncan

D113 DSO-NS

* **New Edition Number 52 June 9, 2020**